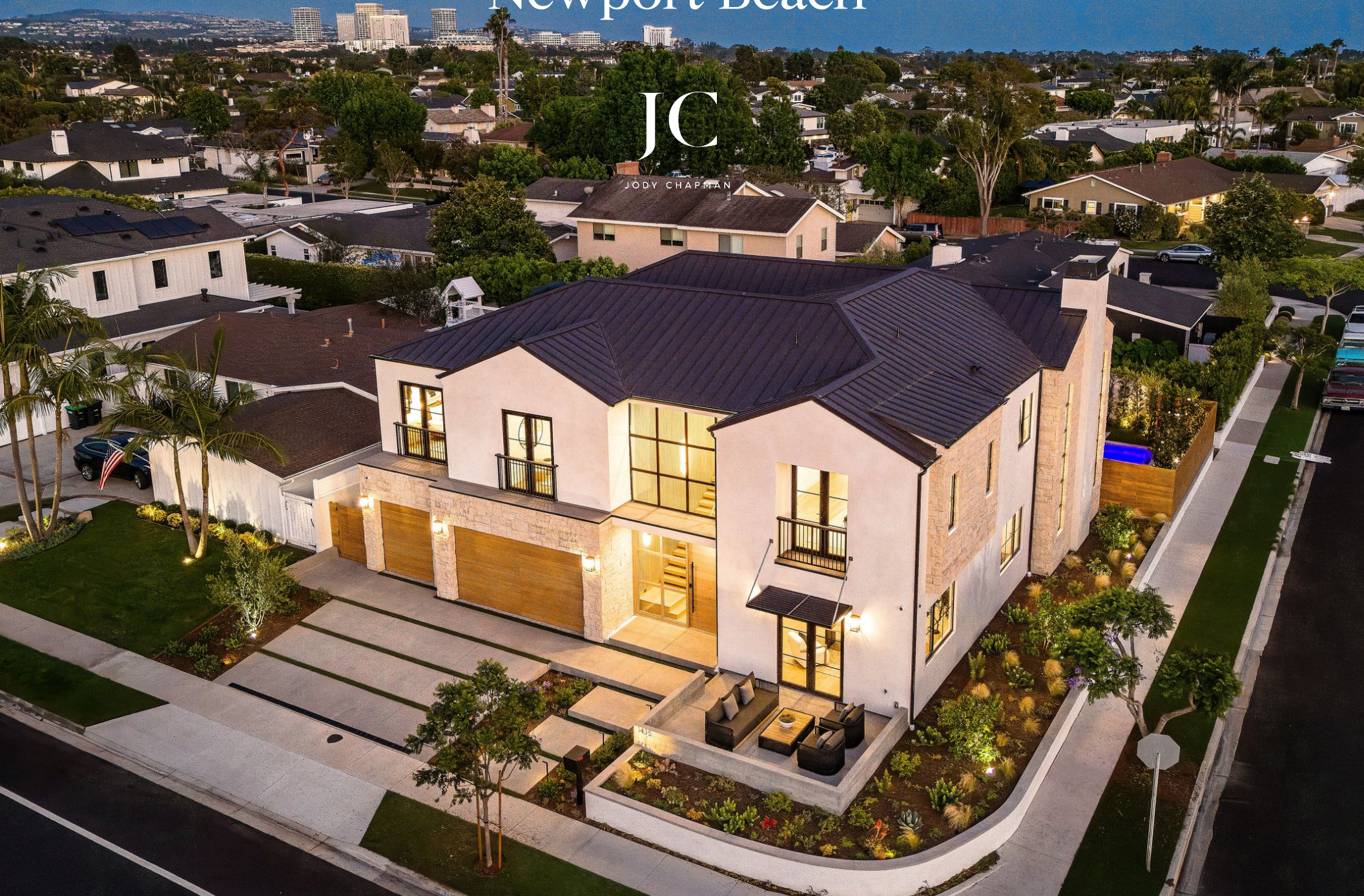


1435 Mariners Drive

Newport Beach

JC

JODY CHAPMAN





5 Bed | 6.5 Bath | + Office | + Bonus | 4,926 Sq. Ft.

1435 Mariners Drive, Newport Beach

Embody the pinnacle of modern elegance & architectural excellence in this newly completed Newport Beach custom masterpiece, created by a collaborative, vision forward collective, with decades of international experience. Perfectly sited on an ideal 8250 sq foot sunlit corner lot in one of the most prestigious neighborhoods in the entire city, this flagship endeavor is ready for its reveal. Introductions are made at the stately entrance to this residence, at an intersection of glass walls and an impressive oversized custom wood pivot entry door. Stunning 25-foot ceilings in a striking entryway adorned with precision vertical hardwoods, gorgeous floating stairs and custom lighting evoke a true sense of arrival as this experience begins. The great room with its soaring ceilings and commanding fireplace is breathtaking. Surrounded by architectural glass and European sliding pocket door systems, this space enjoys optimal natural lighting and will become one of preferred places for entertaining and everyday living. The kitchen is spectacular, with custom cabinetry, island seating, sophisticated stone selections, and a complement of Thermador appliances, all within full view of the resort inspired rear yard. Located behind a concealed door, yet wholly accessible from the rear yard dining and poolside loggia areas, you'll find a complete catering kitchen. A private main floor guest suite, a generously sized office with large patio, a media / game suite with full bath, which can be utilized to suit your needs, an extraordinary mudroom with functional and attractive built-in's which will make keeping you organized a breeze, and one of two Laundry rooms complete the main level. Upstairs you'll discover the luxurious primary suite with a private balcony that you've always dreamed of, a transcendent primary bath, and an uber custom closet worthy of magazine coverage. All three secondary bedrooms are ensuite with walk-in closets. There is even a formal study area designed for focus, efficiency and well-being. Embrace the best of this Southern California Climate in your own idyllic setting, poolside for the warmer months, fireside when the cool ocean breezes settle in. There is even a putting green. This home is a testament to the collaboration of a visionary team. From its flawless floor plan to its resort-inspired rear yard and meticulous finishes throughout, this residence sets a new standard for luxury living in one of the most coveted locations on the globe.





1435 Mariners Drive, Newport Beach



Jody Chapman

DRE# 01338862

REALTOR®

M: 949.689.8594

Jody@ChapmanREgroup.com



Sam Kilic

Mulberry Real Estate, Inc.

DRE# 01819341

M: 714-866-8183

SamKilic5@gmail.com